

Effluent Flow Monitoring Solution

Connecting
your business.



Peter Green
IT System Engineer

Endress+Hauser
InfoServe GmbH+Co. KG
Colmarer Straße 6
79576 Weil am Rhein
Germany

Phone +49 7621 975 03
Fax +49 7621 975 678
info@infoserve.endress.com
www.infoserve.endress.com

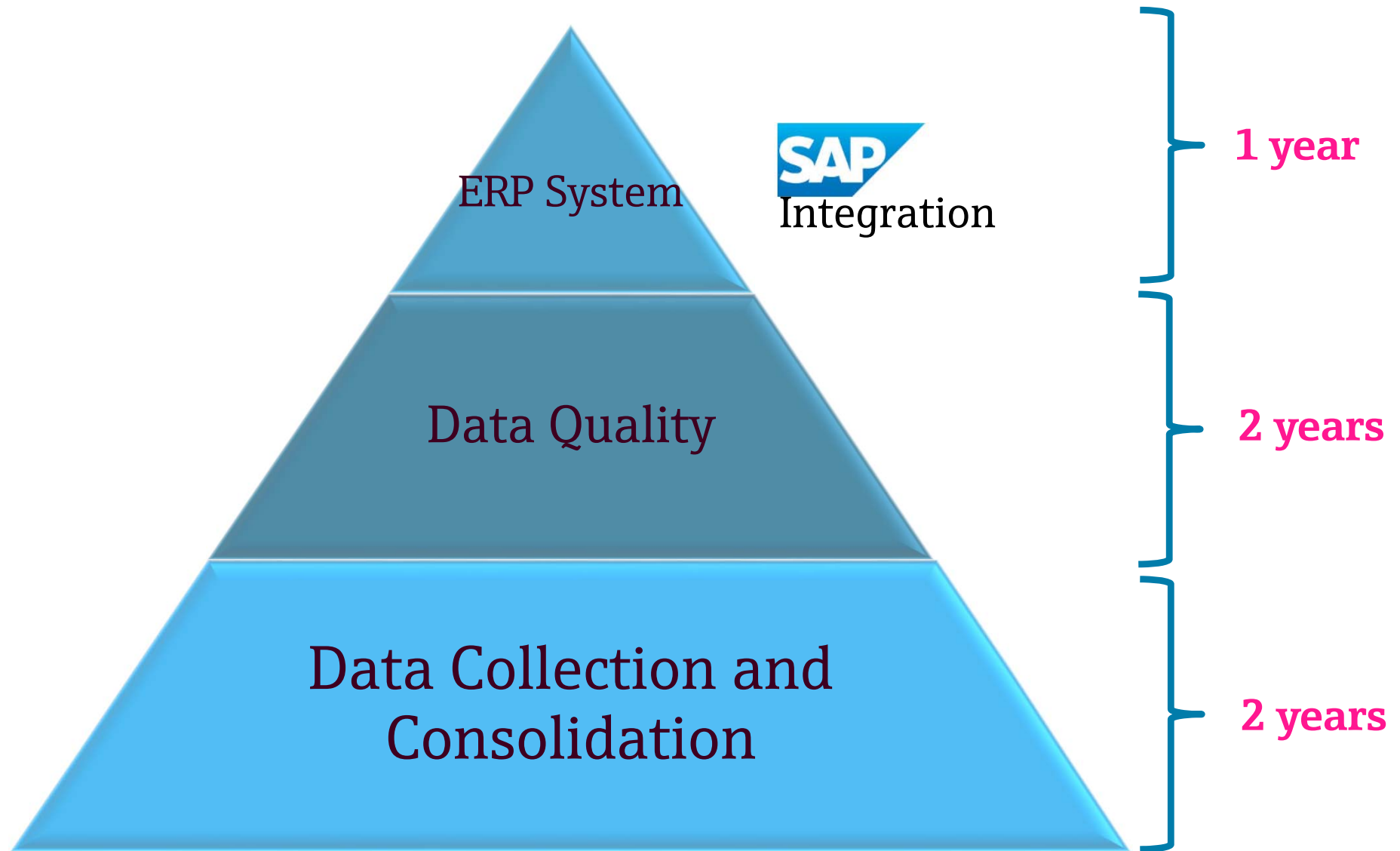
Endress+Hauser 
People for Process Automation

Challenges on Effluent Monitoring

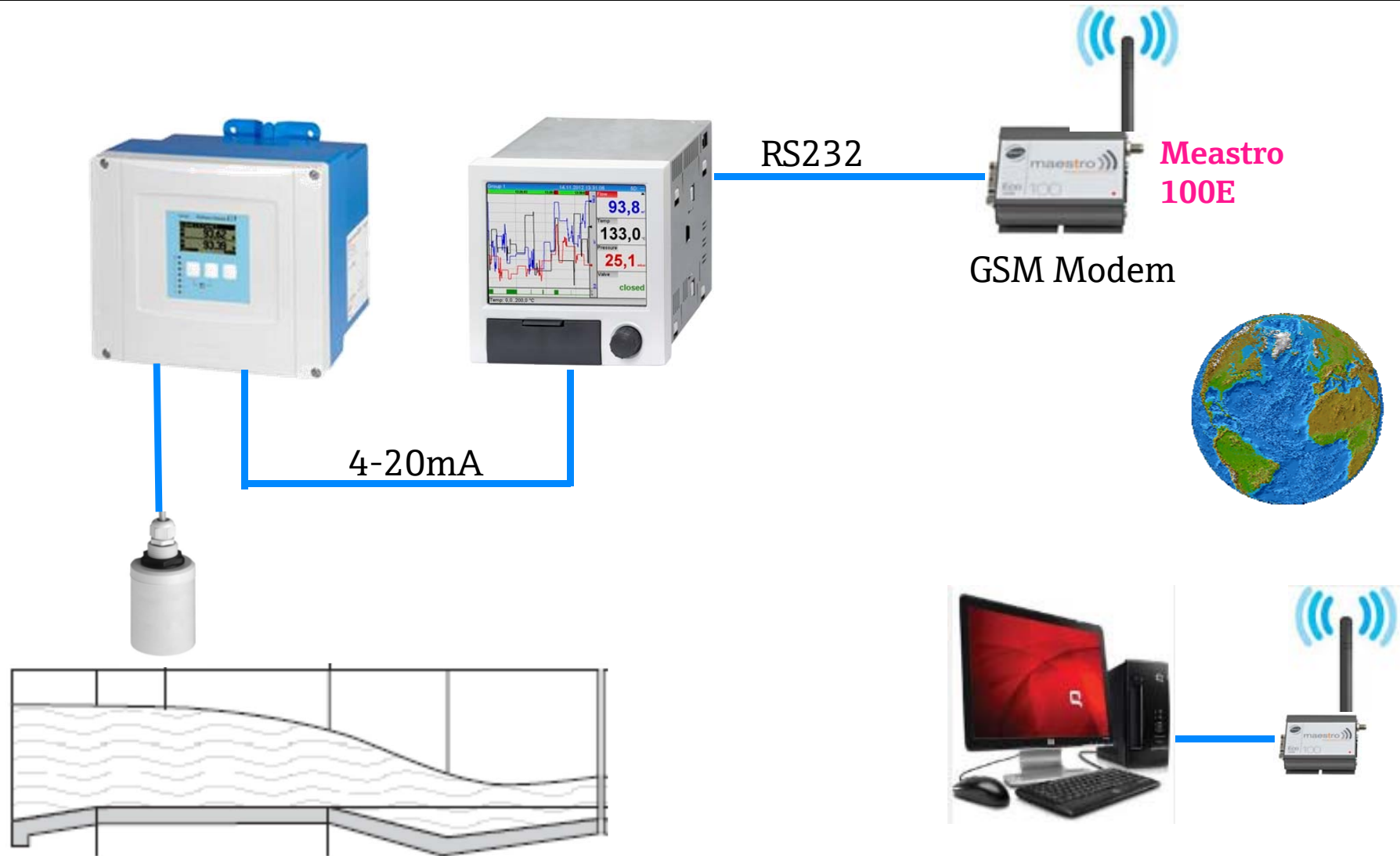
- Inconsistency on data collection
- Inaccuracies of the data
- Time consuming to consolidate the report for every Unit Office
- Missing data



Continuous Support for Effluent Monitoring Solution



System Architecture



Flow measurement in open channels

Existing Telemetry System Architecture



32



43



27



2



Unit Office

104 Sites



Site installations

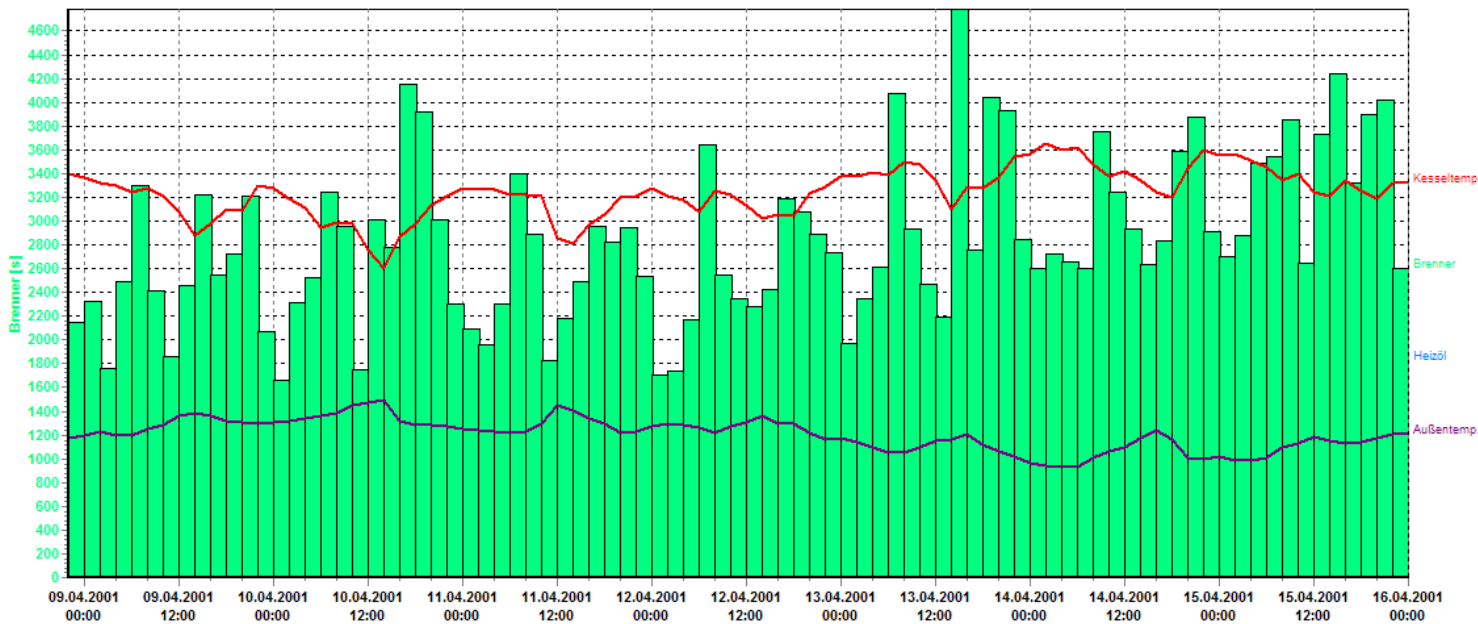


Reporting

- Reporting can be exported to csv file freely which makes consolidation of all STP report faster and accurate.

**Max
Flowrate
(m³/h)**

**Average
Flowrate
(m³/h)**



**Daily
effluent
(m³)**

Data Transfer from ReadWin to FDM Software

ReadWin 2000



Field Data Manager Software



.rsd Data

Use the binary export function of ReadWin 2000 and secure import function of **Field Data Manager (FDM)** software.



FDM – Your data are secure

User administration:

- Conformity to FDA 21 part 11
- Different security levels for user password
- User can be assigned to limited access (e.g. gets only access to defined devices, ...)
- User logon and -off will be documented tamper-proof in the database

Audit trail:

- Tamper-proof documentation of all database activities (user login, data report generation, device data gets uploaded, exports, imports, ...)
- Export and print out of audit trail supported

Data security:

- Tamper-proof data handling in the database → secure and reliable data transfer
- Manipulated data will be detected and reported
- Manual data can be uploaded (.csv) and used as original device data but data will be signed as “manual”

FDM – Data management “automatic services”

- Readout device → Readout measured values via interface
- Binary export → Export to protected format (*.fdm)
- Time synchronization → Synchronization of PC time and device time
- Delete data → Delete data from FDM data base
- Print out data → Print out of recorded values
- xls/csv export → Export to open format (*.xls, *.csv)
- PDF export → Export to PDF file
- Web export → Export of values into a middleware

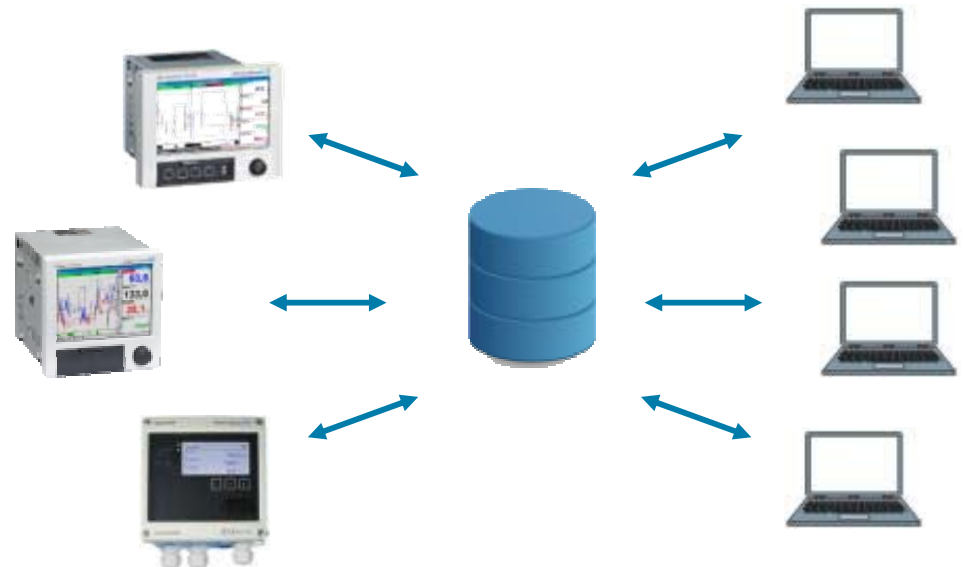


FDM Technology & Architecture

FDM stores the data tamper-proof in an SQL database. The database can be installed **locally** or in a **network** (Client/Server)

Following databases are supported:

- PostgreSQL™
Provided on the Field Data Manager Software CD. No manual installation or configuration required. Database is configured automatically during installation.
- Oracle™
Version 8i or higher.
- Microsoft SQL Server™
Version 2005 or higher.



Thank you very much for your attention

