

## Technical Excellence & Simplicity

# Simple – Fast – Compact

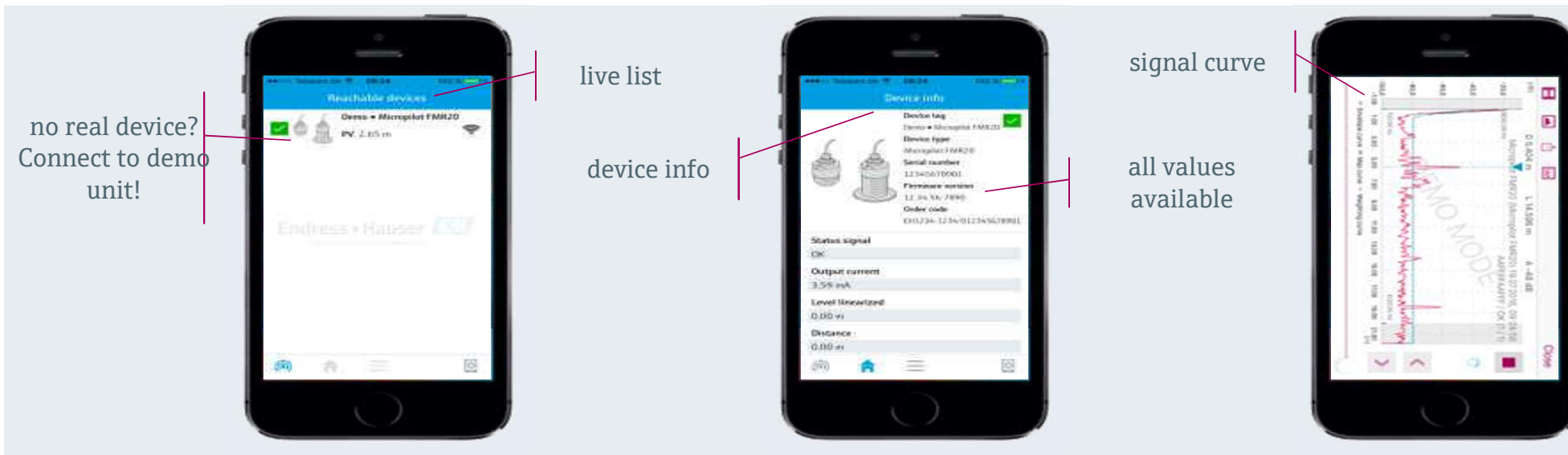


07/05/2018

## SIMPLE - New possibilities for configuration and communication

### Wireless remote access via SmartBlue app

- Discover all functions of SmartBlue
  - simulated level in live list
  - setting up parameters
  - recording signal curve



## Micropilot FMR10/FMR20

- Compact design
  - Endress+Hauser **invented direct emitting radar chip**
- Full **PVDF** body
- Measuring range of 5m or 10m or 20m
- $\pm 5\text{mm}$  or  $\pm 2\text{mm}$  accuracy
- Ingress protection class IP 66, 68 / NEMA4x, 6P (FMR20)
  - **Hermetically sealed** housing and wiring
  - **Fully potted** electronics
- Large variation for process connection
  - Flush mounted via screw-in / slip-over flange
  - Hanging with screw-in flange
  - Ceiling-/ wall mounting, hanging



## Application – Monitoring IBC tanks



- Forced out load cells
- Easy exchange of IBC-tanks
- No calibration/tare of load cells

Fit for purpose instrumentation line  
**Picomag DMA15/20/25/50**

DMA 15/20/25




DMA 50



Flow and temperature measurement

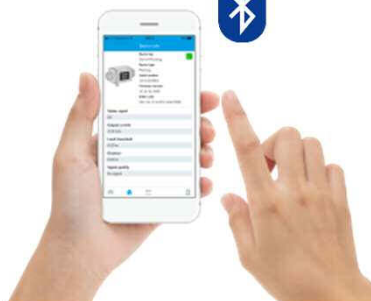
Measuring accuracy:  $\pm 2\%$  o.r  $\pm 0.5\%$  o.f.s  
Repeatability:  $\pm 0.2\%$  o.f.s

-10 to +70 °C

2 free configurable outputs incl.  **IO-Link**

No service needed

Stocked product





Fit for purpose instrumentation line

## The new Picomag

Intuitive commissioning and operation via SmartBlue App



### Knock functionality

- Knock 1: Overview of configured parameters
- Knock 2: Change Bluetooth status ON

User-friendly and auto-rotatable display



## Application – Centrifugal Separator



### Centrifugal Separator (environment)

- Separator must be monitored by water seal and cooling system.
- Non-hygienic applications in environment of a centrifugal separator

### Benefit for skid builders:

- Single supplier
- Reliable quality



## COMPACT – Product Line



Level switches & sensors



Flowmeters & Flow switches



Pressure and temperature switches & sensors

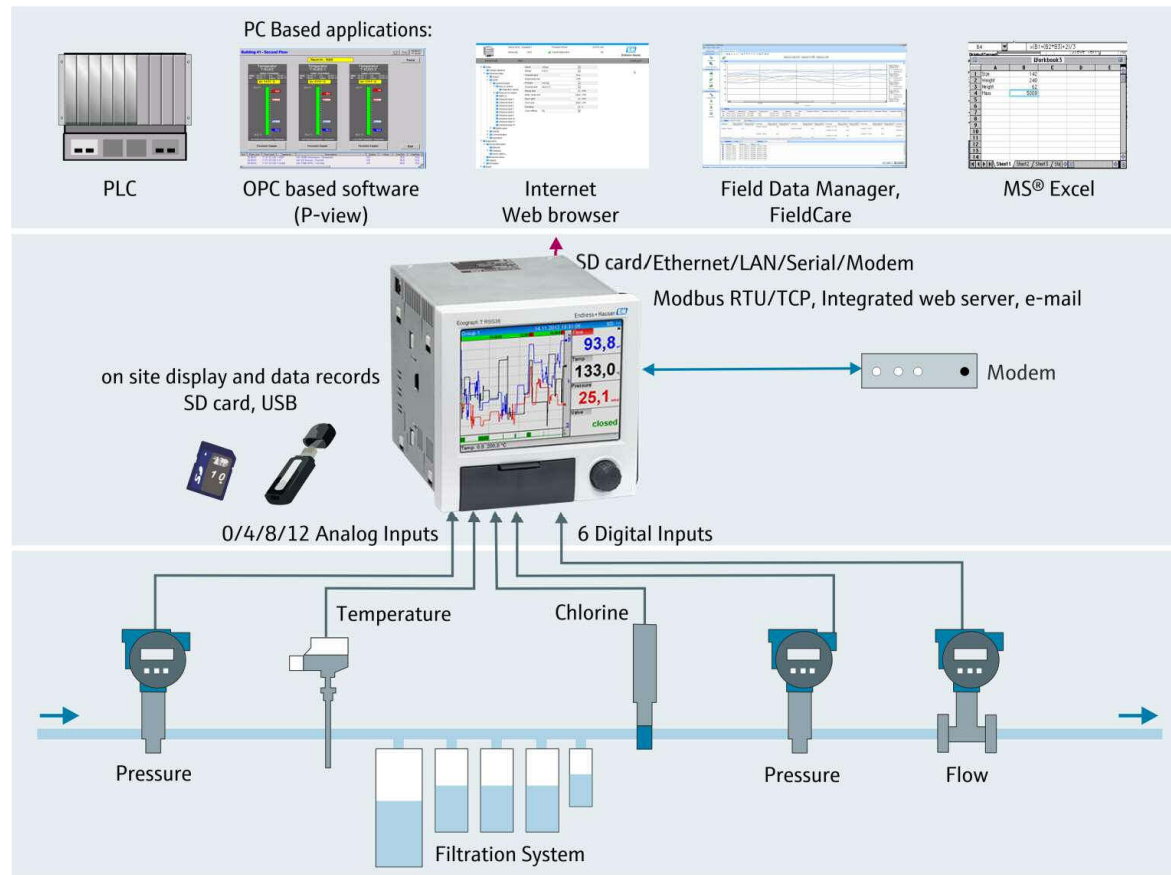


Data management and components

**Compact**



## FAST – Data Collection with Ecograph RSG35



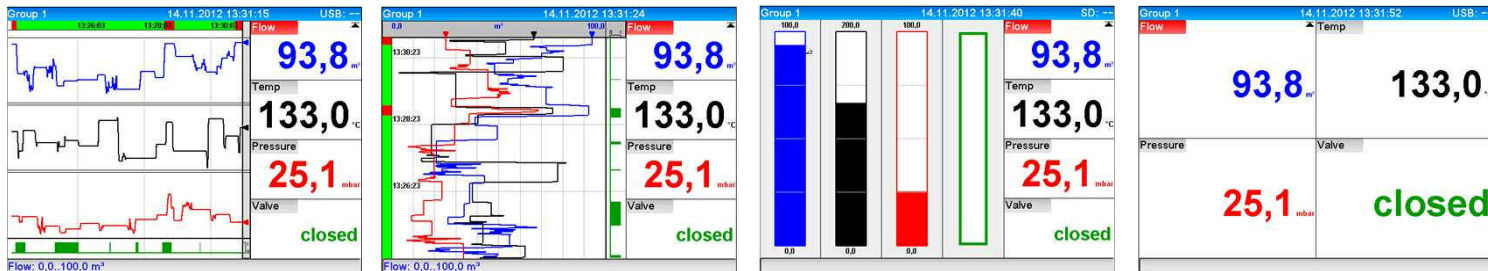
System Overview: Application example of a filtration system

## Informative – Display flexibility

### Informative

#### Flexible display possibilities

- Indicate **curves, waterfall, bargraph** or **digital values** dependent on the specific process and data
- Display of curves and waterfall in ranges gives an improved overview



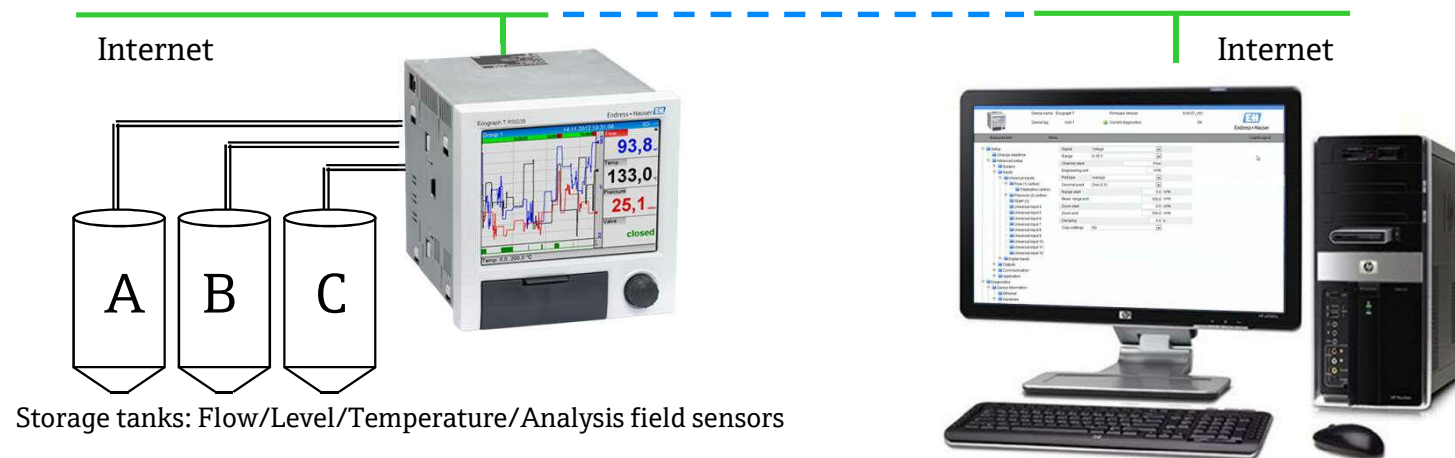
Feature	Benefit	Added Value
■ Flexible display possibilities	■ Indication as required for the specific process	■ Quick process overview ■ Wide range of applications

## Web Server – Easy access to information remotely

New web server – worldwide access

### Integrated webserver

- Easy communication to the webserver directly via Ethernet
- Access to current and historical process data via conventional web browsers
- No additional software is needed
- Up to 5 users can access the webserver at the same time



## Applications

### Typical applications

Applications can be found in many business areas and industrial branches:

- Quality and quantity supervision in the water-/ waste water industry
- Monitoring in utilities
- Display and record critical parameters in production processes
- Tank and level monitoring

**Everywhere where process parameters need to be monitored the Ecograph T RSG35 is the versatile and cost-efficient answer!**



## Summary

### Simple - SmartBlue App

*Wireless remote access via  
Bluetooth® – even into places difficult  
to reach*



### Fast – Data collection



*Minimal effort in getting data  
for better decision making*

### Compact – Basic devices



*Plug & play – small and easy to  
install*

**E+H**direct  
High Quality – Low Price!