

Liquitrend QMW43

Your leverage for process efficiency, safety and product quality



Buildup measurement for cleaning optimization

The QMW43 verifies the status of your cleaning process without the need to open up the tank.

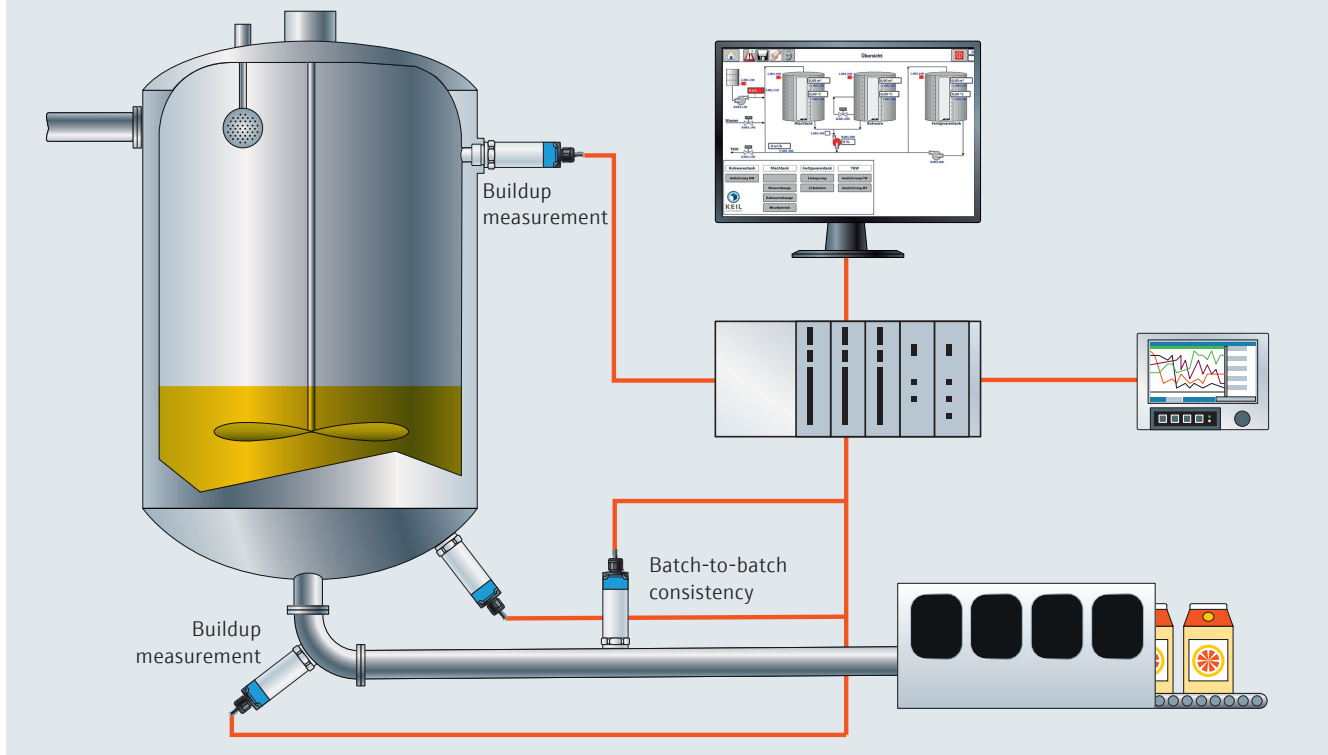
- Continuous measurement of buildup in pipes or tanks
- Optimization of cleaning process
- The device shows detailed data about possible buildup in the pipe or on the tank wall
- Define the source of your buildup thanks to the continuous conductivity measurement
- You control your cleaning resources condition-based and optimize the efficiency of your process

Fingerprint for batch-to-batch consistency

The QMW43 helps you to secure continuous product quality.

- The device recognizes different products based on DC value or conductivity
- Thereby you can verify the conformity of the products or ingredients
- The device differentiates between various media conditions e.g. liquid from foam using the two output signals





✓ Your benefits

Ensure product safety

- Reliable measurement of buildup in installations
- Flush-mounted stainless steel sensor indicates the surrounding conditions in the pipe or tank
- EHEDG and 3A certification as well as EG1935/2004 compliance
- Traceability of materials according to common standards verified by EN10204- 3.1 certificate

Increase plant availability

- Reduce cleaning time to a minimum
- Save installation and commissioning time with an easy to use device
- Reliable measurement independent of media properties for ease of use
- Protect your plant by means of an insight into your process
- Easy interpretation of buildup data in PLC
- Provides clear error and remedy messages and automatic parameter download via IO-Link

Improve product quality

- Batch-to-batch consistency with help of continuous visualization of product parameters
- Repeatable and accurate measurement of buildup thickness and conductivity
- Universal deployment independent of media properties



www.addresses.endress.com